

Metso:Outotec

Flotation services

RCS Froth Management Upgrade



Metso Outotec combines technological synergies to modernize legacy RCS Flotation Cells to the latest froth management developments to ensure maximized metallurgical performance with a launder upgrade.

The Metso Outotec RCS Launder Upgrade can deliver substantial improvements in a key aspect of the flotation process, being froth recovery. To ensure maximum flotation performance, both collection zone recovery and froth zone recovery need to operate efficiently.

Legacy RCS Flotation cells are equipped with DV™ (Deep Vane) flotation mechanism design that improves air dispersion and bubble size distribution. The patent protected DV™ mechanism ensures optimized collection zone recovery.

After the merger of Metso and Outotec into Metso Outotec, maximizing legacy RCS Flotation cells froth zone recovery is now possible by upgrading the launder configuration with the latest froth management developments.

Why modernize to the launder configuration?

Launders are an essential part of any flotation cell, and using a launder with the correct design and orientation for your specific application helps to achieve optimal metallurgical performance.

[Read more at mogoup.com](http://mogoup.com)

Benefits

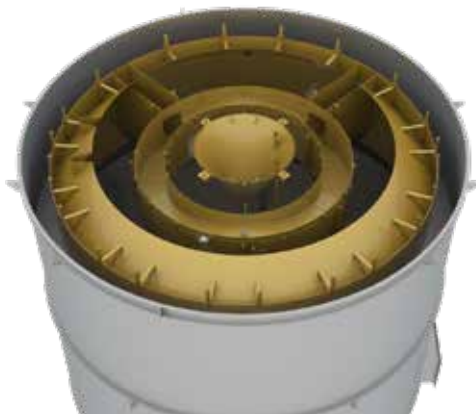
- Higher metallurgical recovery due to increased froth collection
- Optimized froth transport distance and froth surface area
- Enhanced process control and selectivity in the cell
- Maximized metallurgical performance in the froth zone
- Installation and commissioning flexibility



Center Launder Upgrade Package

The center launder radically reduces the froth transport distance to the launder lip and enhances the likelihood of froth overflow into the launder. The longer the transport distance the more likely the bubbles will burst before reaching the launder, resulting in the valuable material loss.

Reducing the froth surface area with the new froth cone and outer crowder results in a thicker, more stable, and more productive froth.



Center launder upgrade

Radial Launder & Crowder Upgrade Portfolio

Metso Outotec has re-engineered the launder upgrade packages to fit into the legacy RCS flotation cells. Upgrading these cells with the correct launder arrangement will result in higher metallurgical recovery and process control.

Our specialists will customize each launder configuration to suite your specific process characteristics.

Scope of supply

- Recalculation of required froth surface area, transport distance and lip length
- New launder configuration
- Installation, commissioning, and start-up advisory
- New operational parameters optimization
- Training

Applications

- Brownfield operations looking to improve performance
- Plants with newly increased throughput
- Larger flotation cells with high surface areas