

Crusher automation Nordberg IC3000 VSI crusher automation





Barmac VSI crushers process a diverse range of materials in applications across the globe.



The Nordberg IC3000 automation system monitors and regulates crushing load, which minimizes the risk of inconsistent product.

Nordberg IC3000 - maximizing the potential of your VSI crusher

Experience has proven that the key to profits in the aggregate production and minerals processing industries lie in the ability to produce consistent products of high quality.

As in other industries, automation plays a critical role in achieving that consistency. When a Metso Barmac VSI crusher is combined with a Nordberg IC3000

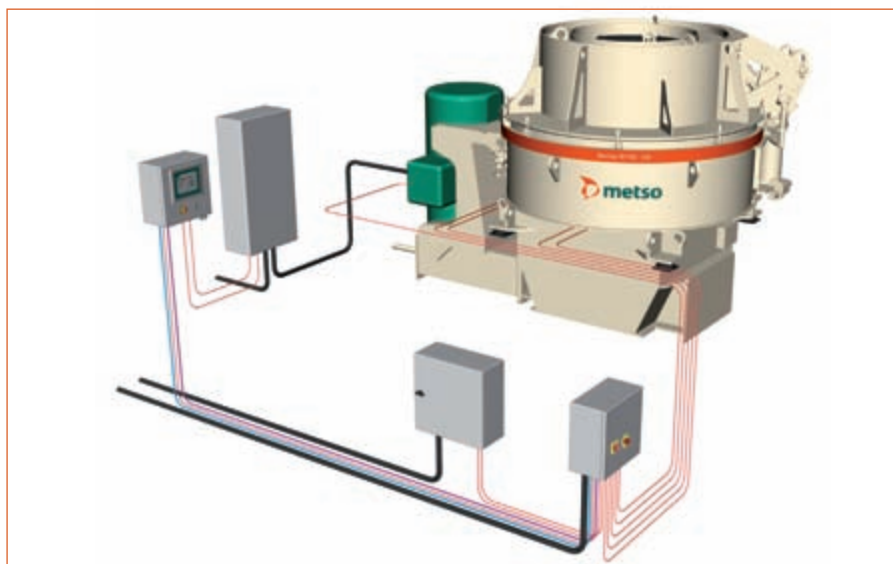
automation system, crushing load is monitored and regulated, minimizing the risk of inconsistent product. Of course this also results in greater crushing efficiency and, ultimately, improved product quality and cost-efficiency.

However the benefits of applying the Nordberg IC3000 automation system to the crushing process is not limited to

load regulation. The Nordberg IC3000 also provides improved safety features for protection of operators and the crusher. Maintenance time is reduced with the integrated automatic lubrication system. This reduces risk to the crusher from damage due to under or over greasing.

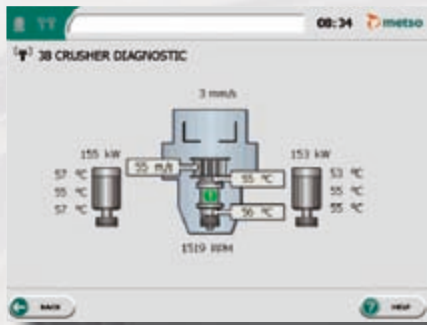
Today's customers are looking for suppliers who focus on solutions, not just products. With this in mind, Metso has developed the IC3000 automation system to provide increased flexibility and versatility, while supporting easy operation and maintenance. This allows seamless integration of your Metso Barmac VSI crusher with the rest of your Metso plant. Not only that, the IC3000 will also integrate with site level SCADA systems using industry standard communications protocols.

A Metso Barmac VSI crusher in combination with a Nordberg IC3000 automation system offers the ultimate in consistent, efficient and profitable crushing.



A complete Metso Barmac VSI crusher set up with an IC3000 automation unit

IC3000 operation features include lubrication control, crusher load monitoring and a safety system.



Crusher Diagnostic



Crushing log



20

19

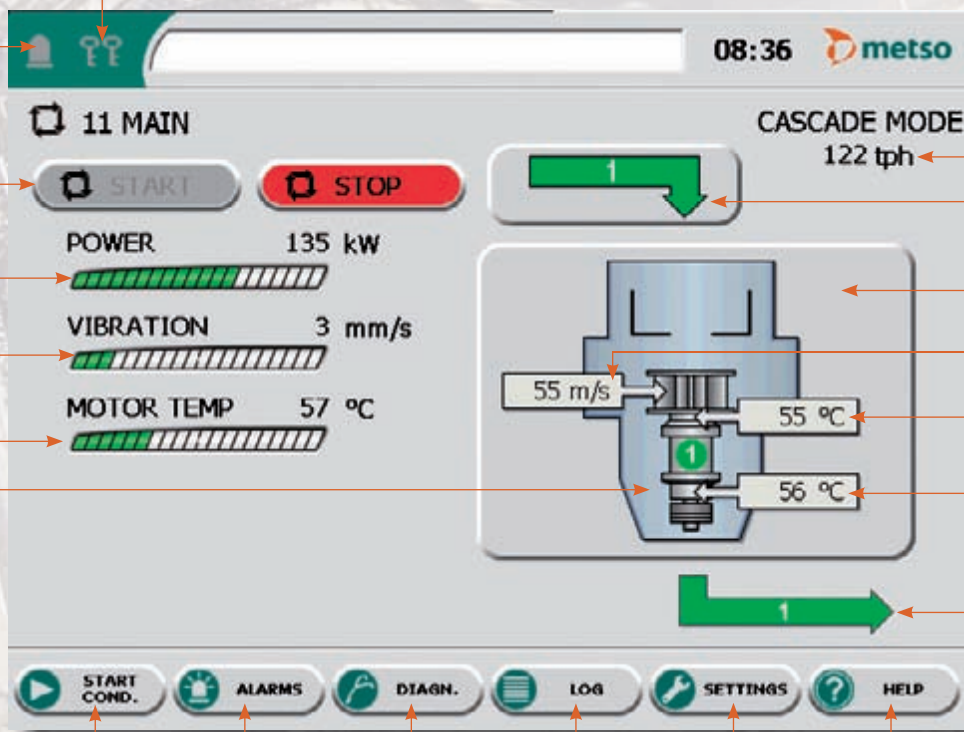
7

8

9

10

17



12

13

11

14

15

16

18

1

2

3

4

5

6

- 1- Access to the «Starting conditions» menu
- 2- Access to the «Alarms» menu
- 3- Access to the «Diagnostic» menu
- 4- Access to the «Log» menu
- 5- Access to the «Settings» menu
- 6- Access to the «Help» menu
- 7- Process start and stop

- 8- Crusher power indication
- 9- Crusher vibration indication
- 10- Motor temperature indication
- 11- Access to feeder menu
- 14- Access to crushing modes

- 12- Active crushing mode
- 13- Crusher throughput
- 15- Rotor tip speed
- 16- Bearing temperatures
- 17- Crusher running status
- 18- Discharge conveyor running status
- 19- Active alarm indication
- 20- User level

Metso's Mining and Construction crushing and screening equipment

Product families:

Unit crushers

- C series jaw crushers
- Primary gyratory crushers
- GP series cone crushers
- HP series cone crushers
- MP series cone crushers
- NP series horizontal impact crushers
- Barmac series vertical impact crushers

Unit screens

- DF series screens
- CVB series screens
- FS series screens
- TS series screens
- MF series screens
- RF series screens

Unit feeders

- TK series feeders
- VF series feeders
- LH.G series feeders
- VG series feeders
- PF series feeders
- HRBM series feeders

Mobile crushing and screening plants

- Lokotrack LT series track-mounted crushing plants
- Lokotrack ST series track-mounted screening plants
- Lokotrack CT and CW series track- and wheel-mounted conveyors
- Nordberg NW series wheel-mounted crushing plants

Stationary crushing plants

- Complete plants for aggregate production
- Complete plants for recycling applications



All Metso Minerals Oy Tampere Works equipment is produced in accordance with a quality assurance system that complies with the ISO 9001 standard, as certified by Lloyd's Register Quality Assurance Limited.



www.metso.com/miningandconstruction
minerals.info.csr@metso.com

Mining and Construction Technology main contacts

AUSTRALIA AND NEW ZEALAND

Metso Minerals (Australia) Ltd
1110 Hay Street
West Perth, WA 6005
Australia
Phone: +61 8 9420 5555
Fax: +61 8 9320 2500

CHINA

Metso Minerals (Beijing) Ltd
19/F, The Exchange Beijing, Tower 4
No. 118 Jian Guo Lu Yi Chaoyang District
100022 Beijing
China
Phone: +86 10 6566 6600
Fax: +86 10 6566 2583

EUROPE, MIDDLE EAST AND AFRICA

Metso Minerals España, S.A.
C/ Rivas N° 4
28032 Madrid
Spain
Phone: +34 91 825 5700
Fax: +34 91 825 5740

INDIA AND ASIA-PACIFIC

Metso Minerals (India) Pvt Ltd
1st Floor, DLF Building No. 10,
Tower A, DLF Cybercity
DLF Phase II
Gurgaon 122002
India
Phone: +91 124 235 1541
Fax: +91 124 235 1601

NORTH AND CENTRAL AMERICA

Metso Minerals Industries Inc.
20965 Crossroads Circle
Waukesha, WI 53186
U.S.A.
Phone: +1 262 717 2500
Fax: +1 262 717 2504

RUSSIA AND OTHER CIS COUNTRIES

ZAO Metso Minerals (CIS)
V.O. Liniya, 70
199178 St. Petersburg
Russia
Phone: +7 812 740 3040
Fax: +7 812 740 5775

SOUTH AMERICA

Metso Minerals Indústria e Comércio Ltda
Avenida Independência, 2500 - Éden
18087-050 Sorocaba
Brazil
Phone: +55 15 2102 1300
Fax: +55 15 2102 1696

METSO'S MINING AND CONSTRUCTION TECHNOLOGY

Lokomonkatu 3, P.O.Box 306
FI-33101 Tampere
Finland
Phone: +358 20 484 142
Fax: +358 20 484 143