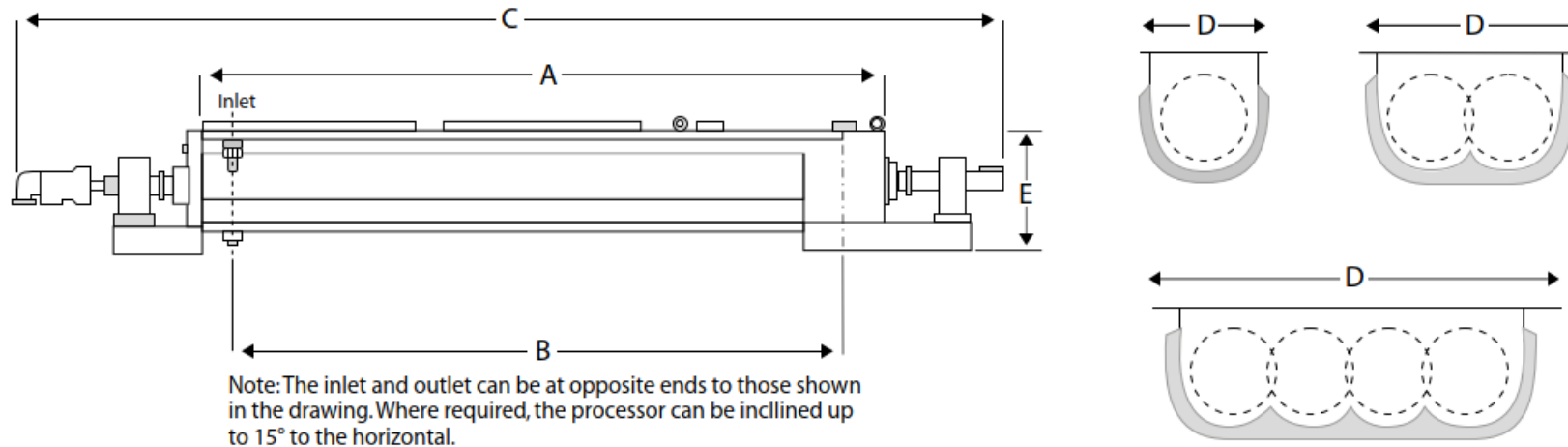


INTRODUCTION

This document provides approximate dimensions for HoloFlite coolers in metric units. All dimensions are approximate for reference only. Actual equipment dimensions may differ from stated values. Equipment arrangements shown throughout this document are approximate for reference only. Actual equipment arrangements may differ. Tabulated dimensions in imperial units (feet and inches) are available upon request. Consult Metso Outotec for additional information.

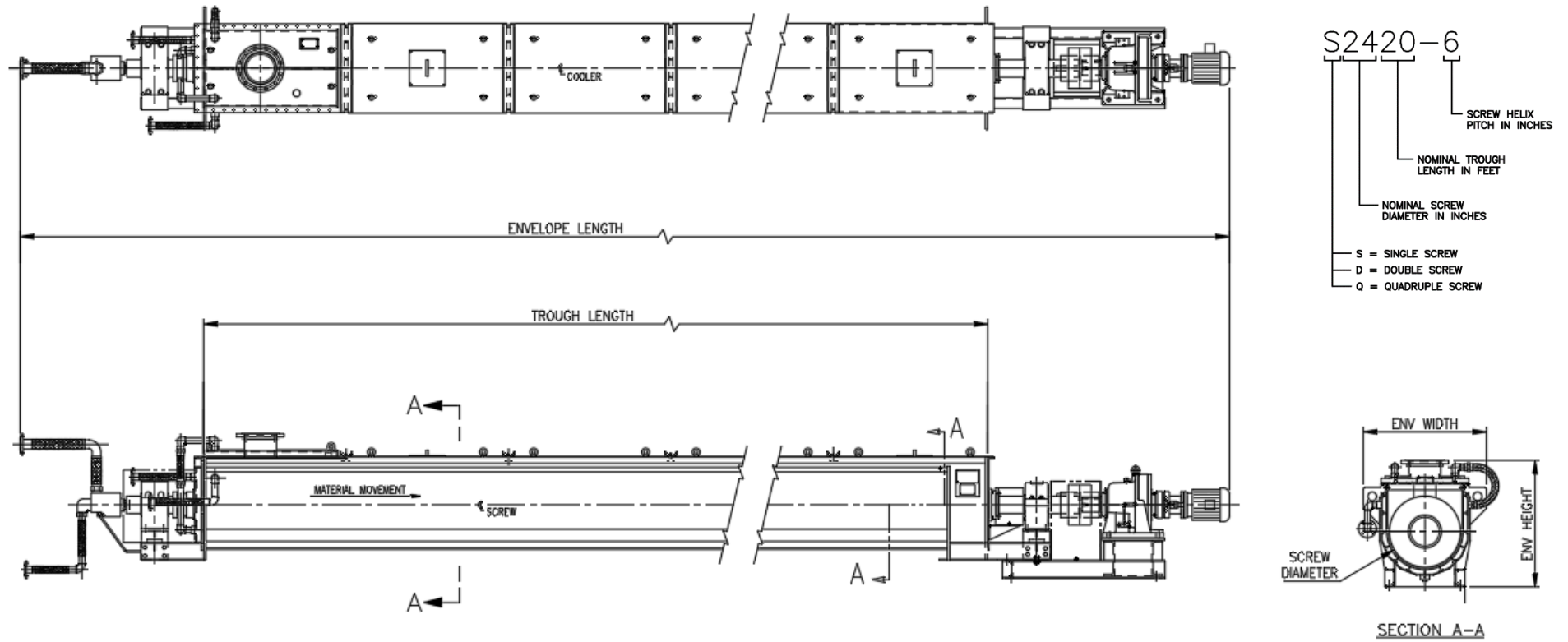


Unit Size & Type Designation:

Each Holo-Flite processor is designated by a group of numbers and letters arranged to specifically identify the unit as indicated to the right.

- D 12 10 – 5
- Pitch of screws – inches
 - Nominal length of screws – feet (mm)
 - Nominal diameter of screws – inches (mm)
 - Number of screws in tier – S – single
D – double
Q – quadruple

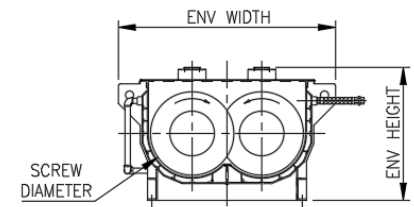
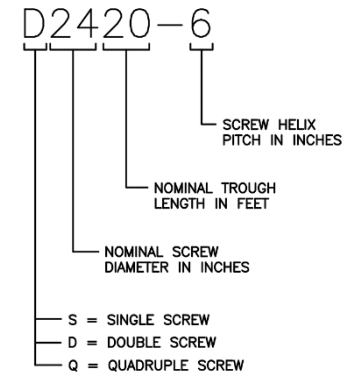
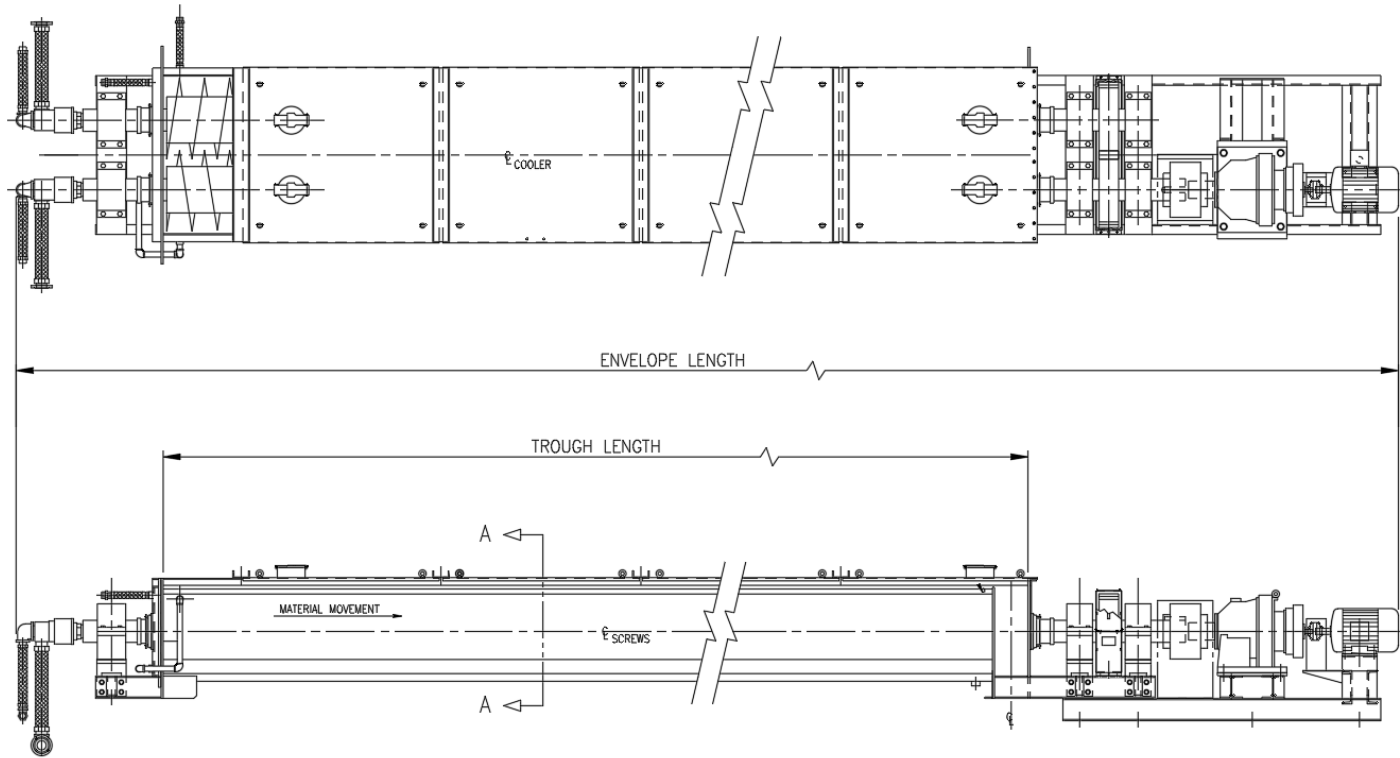
SINGLE SCREW COOLERS



SINGLE SCREW COOLERS

HoloFlite Model	Screw Diameter (mm)	Trough Length (m)	Envelope Dimensions (m)		
			Length	Width	Height
S0710-4	175	3.5	5.0	1.0	0.5
S0712-4	175	4.0	6.0	1.0	0.5
S0714-4	175	4.5	6.5	1.0	0.5
S1210-5	300	3.5	6.0	1.0	1.0
S1212-5	300	4.0	6.5	1.0	1.0
S1214-5	300	4.5	7.5	1.0	1.0
S1216-5	300	5.0	8.0	1.0	1.0
S1218-5	300	5.5	8.5	1.0	1.0
S1614-6	400	4.5	8.0	1.0	1.0
S1616-6	400	5.0	8.5	1.0	1.0
S1618-6	400	5.5	9.0	1.0	1.0
S2410-6	600	3.5	5.5	1.5	1.5
S2412-6	600	4.0	6.0	1.5	1.5
S2414-6	600	4.5	8.0	1.5	1.5
S2416-6	600	5.0	8.5	1.5	1.5
S2418-6	600	5.5	9.0	1.5	1.5
S2420-6	600	6.5	10.0	1.5	1.5
S2422-6	600	7.0	10.5	1.5	1.5
S2424-6	600	7.5	11.0	1.5	1.5
S3020-7	750	6.5	10.0	1.5	1.5
S3022-7	750	7.0	10.5	1.5	1.5
S3024-7	750	7.5	11.5	1.5	1.5
S3026-7	750	8.0	12.0	1.5	1.5
S3028-7	750	9.0	12.5	1.5	1.5
S3620-8	900	6.5	10.0	1.5	1.5
S3622-8	900	7.0	10.5	1.5	1.5
S3624-8	900	7.5	11.5	1.5	1.5
S3626-6	900	8.0	12.0	1.5	1.5
S3628-8	900	9.0	12.5	1.5	1.5

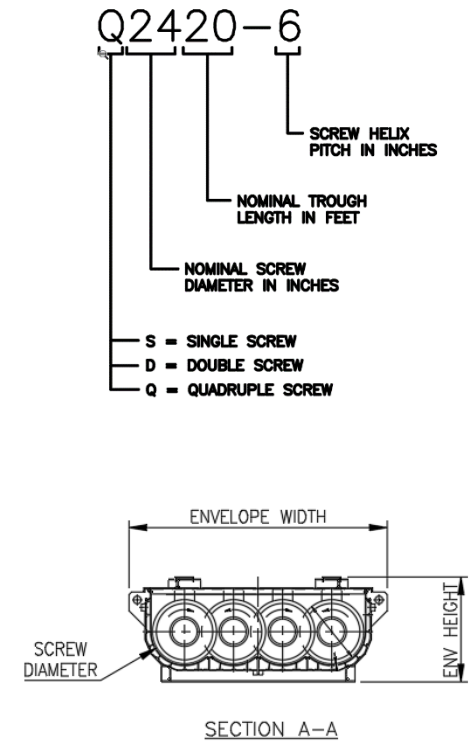
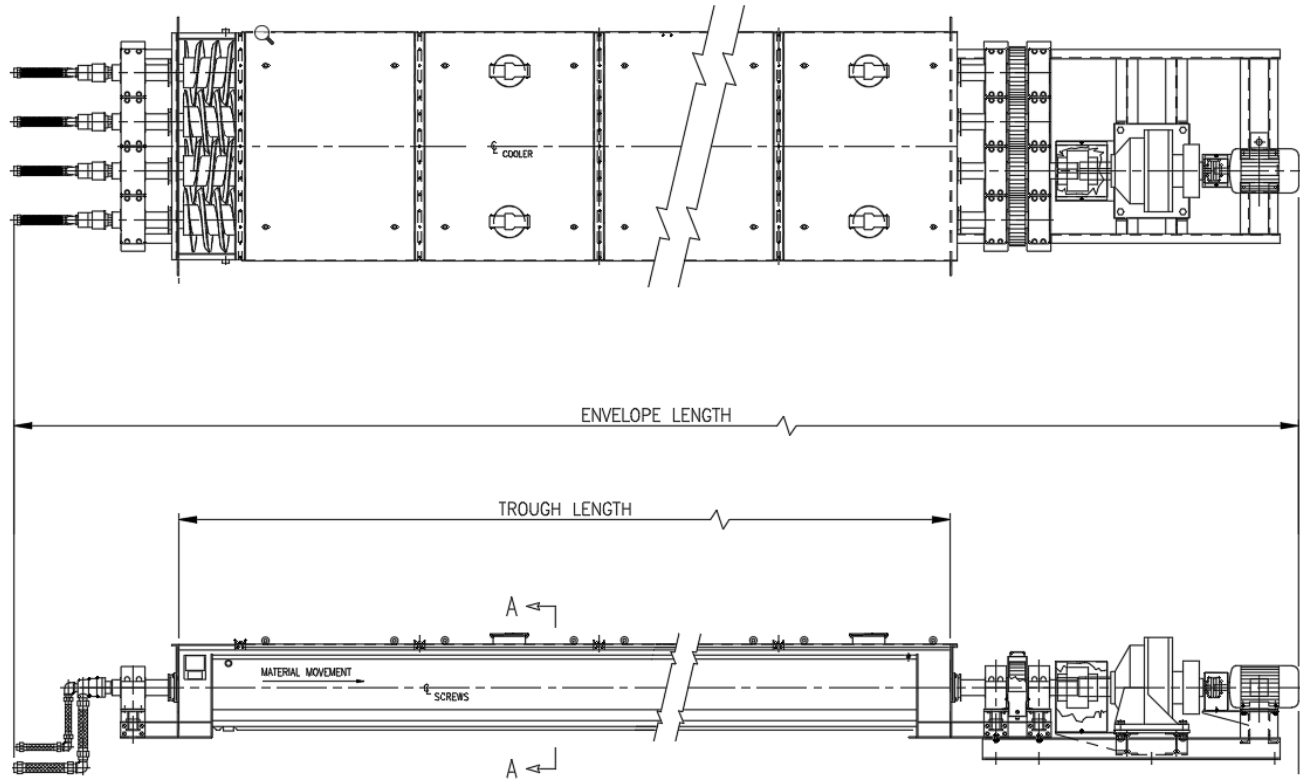
DOUBLE SCREW COOLERS



DOUBLE SCREW COOLERS

HoloFlite Model	Screw Diameter (mm)	Trough Length (m)	Envelope Dimensions (m)		
			Length	Width	Height
D0404-2	100	1.5	2.5	0.5	0.5
D0710-4	175	3.5	5.5	0.5	0.5
D0712-4	175	4.0	6.0	0.5	0.5
D0714-4	175	4.5	6.5	0.5	0.5
D1210-5	300	3.5	7.0	1.5	1.0
D1212-5	300	4.0	7.5	1.5	1.0
D1214-5	300	4.5	8.0	1.5	1.0
D1216-5	300	5.0	8.5	1.5	1.0
D1218-5	300	1.5	9.5	1.5	1.0
D1612-6	400	4.0	8.0	1.5	1.0
D1614-6	400	4.5	8.5	1.5	1.0
D1616-6	400	5.0	9.0	1.5	1.0
D1618-6	400	5.5	9.5	1.5	1.0
D2410-6	600	3.5	7.5	2.0	1.0
D2412-6	600	4.0	8.0	2.0	1.0
D2414-6	600	4.5	8.5	2.0	1.0
D2416-6	600	5.0	9.0	2.0	1.0
D2418-6	600	5.5	10.0	2.0	1.0
D2420-6	600	6.5	10.5	2.0	1.0
D2422-6	600	7.0	11.0	2.0	1.0
D2424-6	600	7.5	11.5	2.0	1.0
D3020-7	750	6.5	11.0	2.0	1.5
D3022-7	750	7.0	11.5	2.0	1.5
D3024-7	750	7.5	12.0	2.0	1.5
D3026-7	750	8.0	13.0	2.0	1.5
D3028-7	750	9.0	13.5	2.0	1.5
D3620-8	900	6.5	11.5	2.5	1.5
D3622-8	900	7.0	12.0	2.5	1.5
D3624-8	900	7.5	12.5	2.5	1.5
D3626-8	900	8.0	13.0	2.5	1.5
D3628-8	900	9.0	14.0	2.5	1.5

QUADRUPLE SCREW COOLERS



QUADRUPLE SCREW COOLERS

HoloFlite Model	Screw Diameter (mm)	Trough Length (m)	Envelope Dimensions (m)		
			Length	Width	Height
Q2414-6	600	4.5	8.5	2.5	1.0
Q2416-6	600	5.0	9.0	2.5	1.0
Q2418-6	600	5.5	10.0	2.5	1.0
Q2420-6	600	6.5	11.0	2.5	1.0
Q2422-6	600	7.0	11.5	2.5	1.0
Q2424-6	600	7.5	12.5	2.5	1.0
Q3020-7	750	6.5	11.5	3.5	1.5
Q3022-7	750	7.0	12.0	3.5	1.5
Q3024-7	750	7.5	13.0	3.5	1.5
Q3026-7	750	8.0	13.5	3.5	1.5
Q3028-7	750	9.0	14.0	3.5	1.5
Q3620-8	900	6.5	12.0	4.0	1.5
Q3622-8	900	7.0	12.5	4.0	1.5
Q3624-8	900	7.5	13.5	4.0	1.5
Q3626-8	900	8.0	14.0	4.0	1.5
Q3628-8	900	9.0	14.5	4.0	1.5