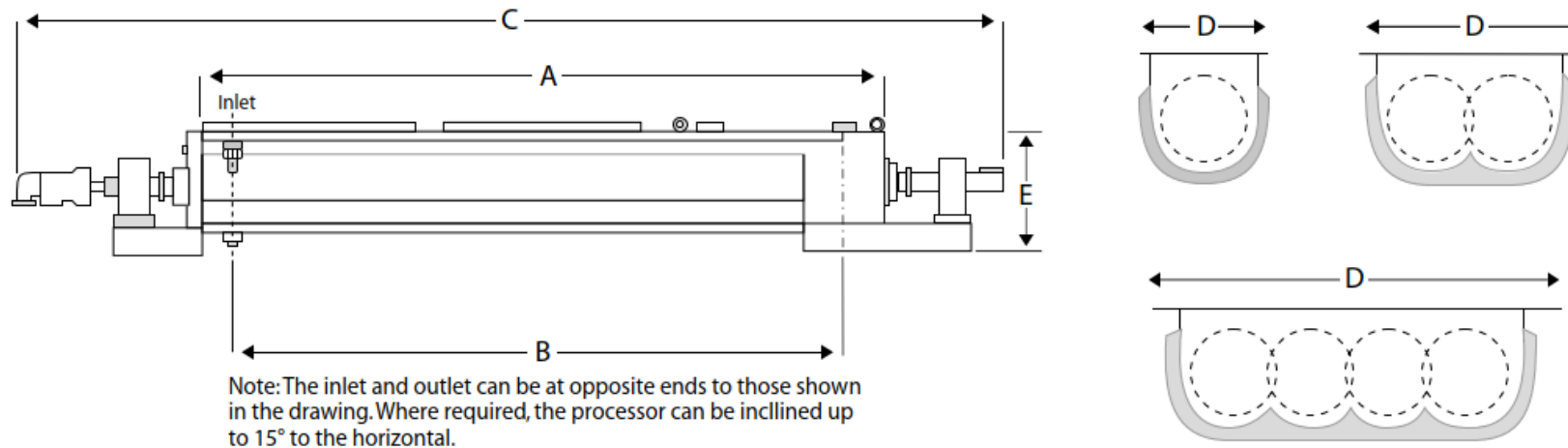


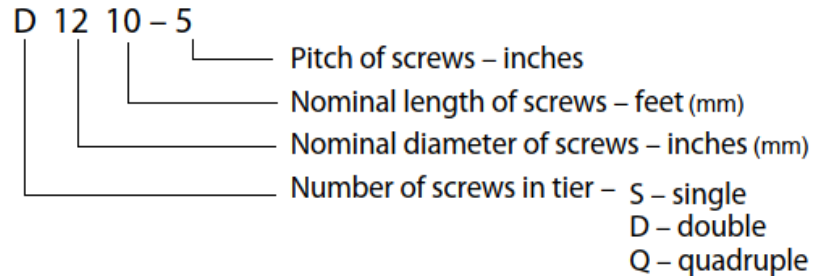
INTRODUCTION

This document provides approximate dimensions for HoloFlite dryers in metric units. All dimensions are approximate for reference only. Actual equipment dimensions may differ from stated values. Equipment arrangements shown throughout this document are approximate for reference only. Actual equipment arrangements may differ. Tabulated dimensions in imperial units (feet and inches) are available upon request. Consult Metso Outotec for additional information.

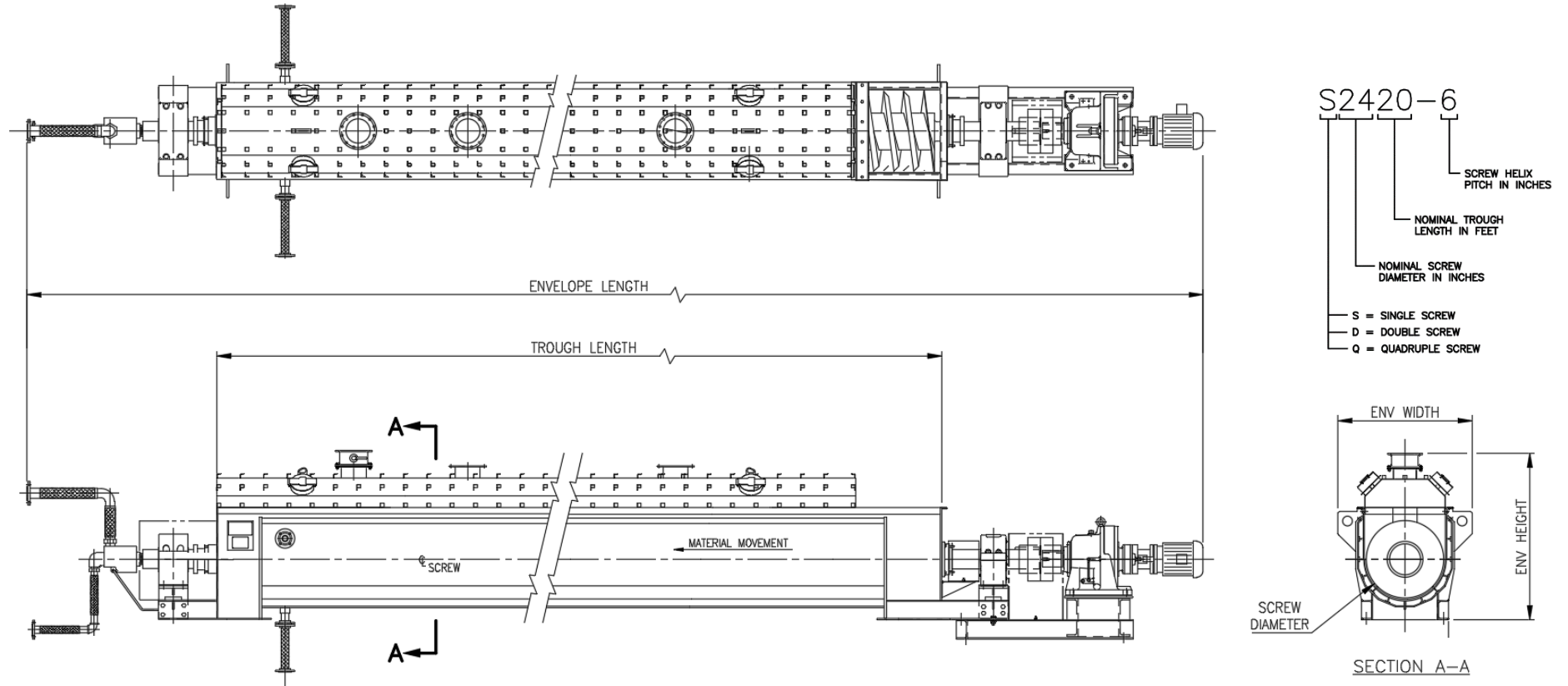


Unit Size & Type Designation:

Each Holo-Flite processor is designated by a group of numbers and letters arranged to specifically identify the unit as indicated to the right.



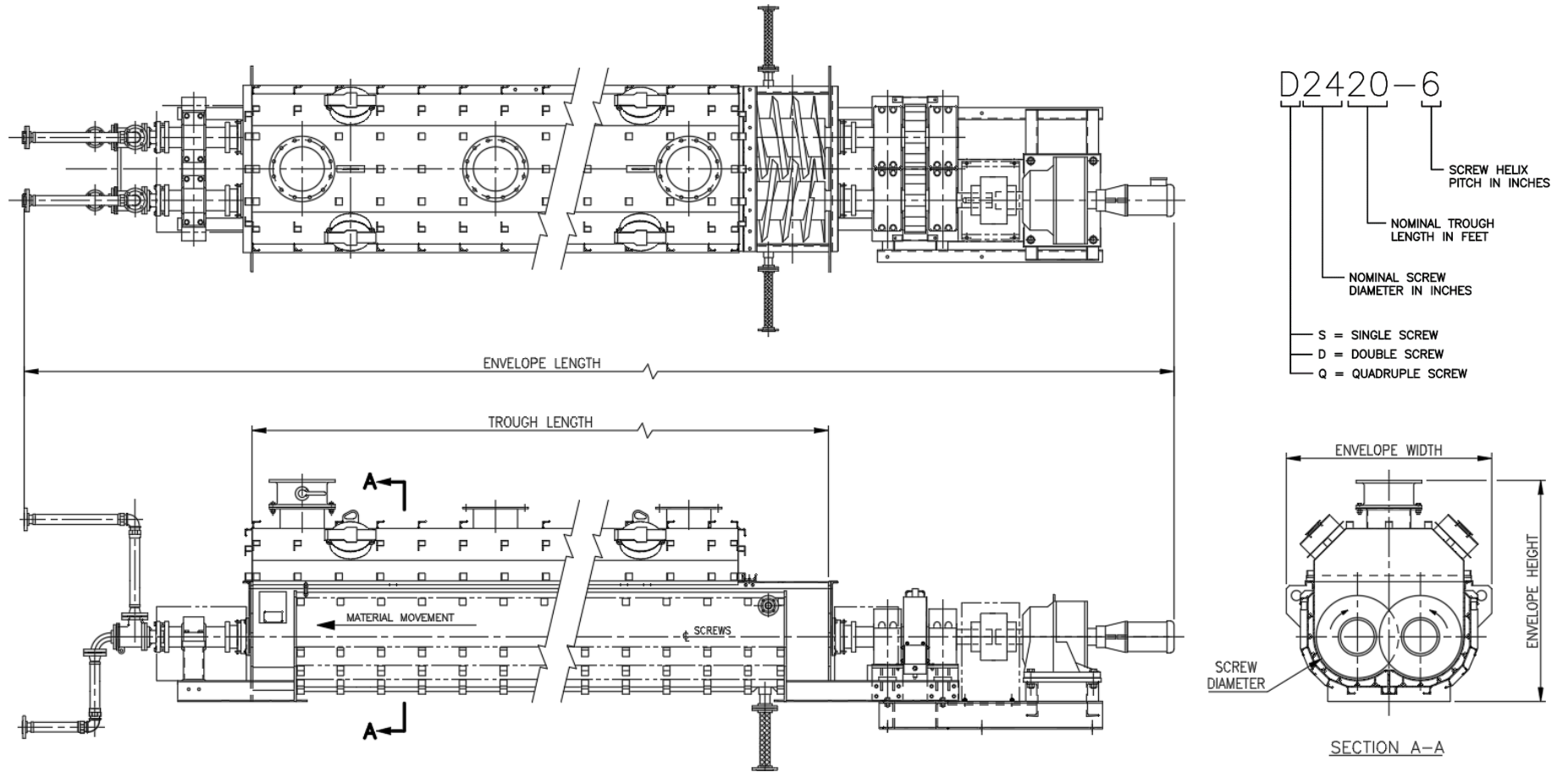
SINGLE SCREW DRYERS



SINGLE SCREW DRYERS

HoloFlite Model	Screw Diameter (mm)	Trough Length (m)	Envelope Dimensions (m)		
			Length	Width	Height
S0710-4	175	3.5	5.0	1.0	1.0
S0712-4	175	4.0	6.0	1.0	1.0
S0714-4	175	4.5	6.5	1.0	1.0
S1210-5	300	3.5	6.0	1.0	1.5
S1212-5	300	4.0	6.5	1.0	1.5
S1214-5	300	4.5	7.5	1.0	1.5
S1216-5	300	5.0	8.0	1.0	1.5
S1218-5	300	5.5	8.5	1.0	1.5
S1614-6	400	4.5	8.0	1.0	1.5
S1616-6	400	5.0	8.5	1.0	1.5
S1618-6	400	5.5	9.0	1.0	1.5
S2410-6	600	3.5	5.5	1.5	2.0
S2412-6	600	4.0	6.0	1.5	2.0
S2414-6	600	4.5	8.0	1.5	2.0
S2416-6	600	5.0	8.5	1.5	2.0
S2418-6	600	5.5	9.0	1.5	2.0
S2420-6	600	6.5	10.0	1.5	2.0
S2422-6	600	7.0	10.5	1.5	2.0
S2424-6	600	7.5	11.0	1.5	2.0
S3020-7	750	6.5	10.0	1.5	2.0
S3022-7	750	7.0	10.5	1.5	2.0
S3024-7	750	7.5	11.5	1.5	2.0
S3026-7	750	8.0	12.0	1.5	2.0
S3028-7	750	9.0	12.5	1.5	2.0
S3620-8	900	6.5	10.0	1.5	2.5
S3622-8	900	7.0	10.5	1.5	2.5
S3624-8	900	7.5	11.5	1.5	2.5
S3626-6	900	8.0	12.0	1.5	2.5
S3628-8	900	9.0	12.5	1.5	2.5

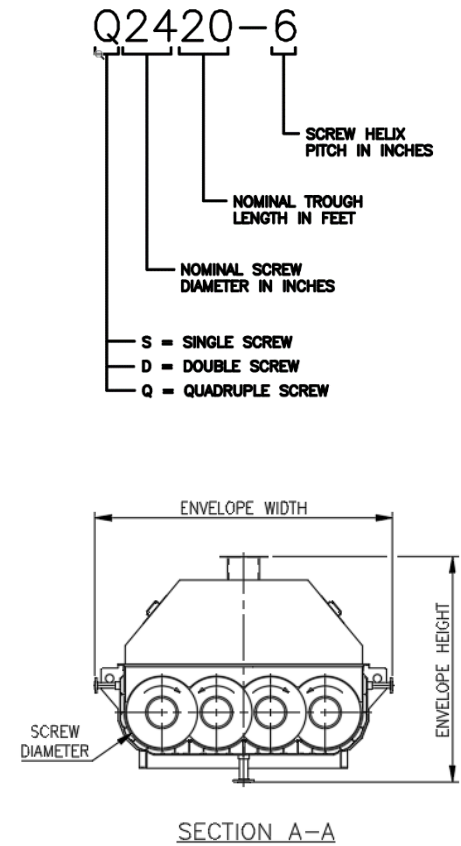
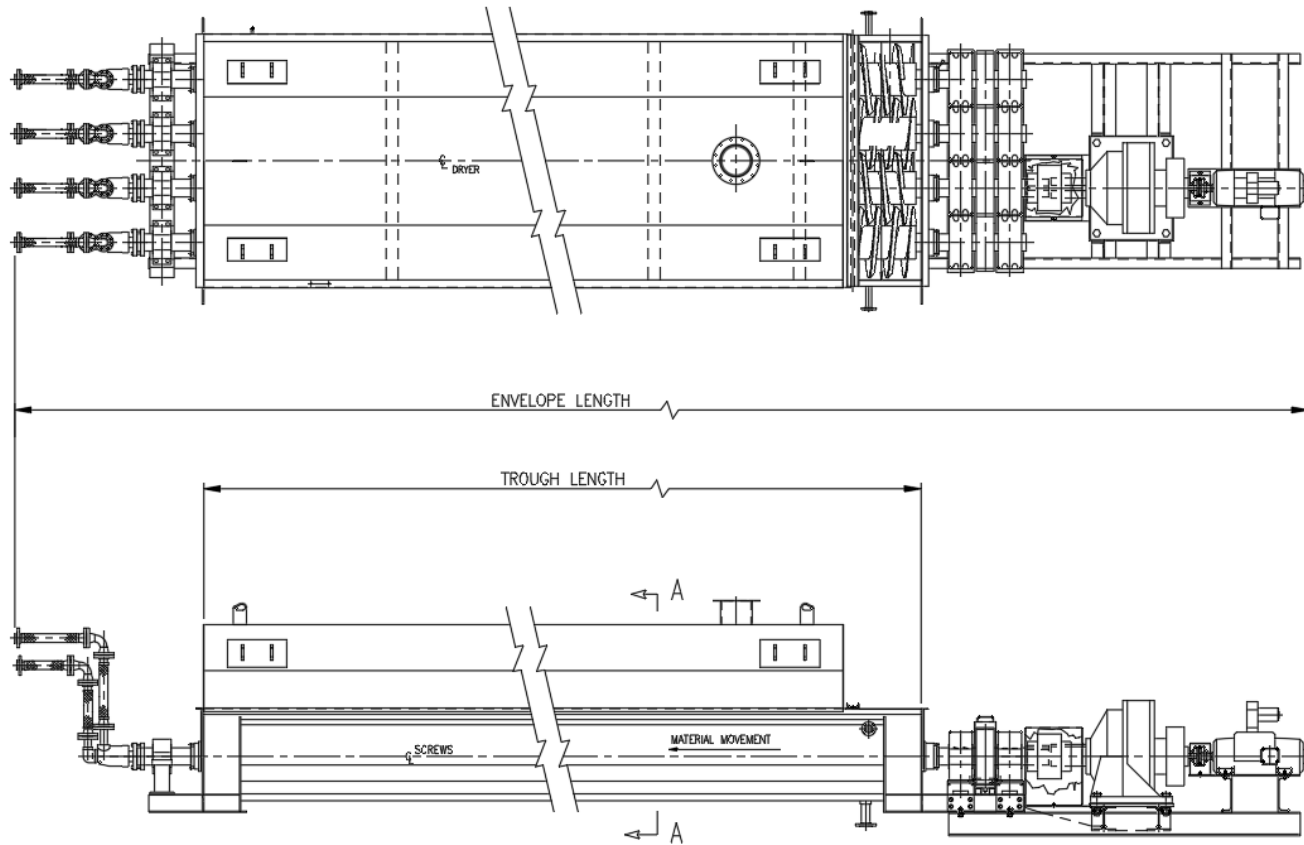
DOUBLE SCREW DRYERS



DOUBLE SCREW DRYERS

HoloFlite Model	Screw Diameter (mm)	Trough Length (m)	Envelope Dimensions (m)		
			Length	Width	Height
D0404-2	100	1.5	2.5	0.5	1.0
D0710-4	175	3.5	5.5	0.5	1.0
D0712-4	175	4.0	6.0	0.5	1.0
D0714-4	175	4.5	6.5	0.5	1.0
D1210-5	300	3.5	7.0	1.5	1.5
D1212-5	300	4.0	7.5	1.5	1.5
D1214-5	300	4.5	8.0	1.5	1.5
D1216-5	300	5.0	8.5	1.5	1.5
D1218-5	300	1.5	9.5	1.5	1.5
D1612-6	400	4.0	8.0	1.5	1.5
D1614-6	400	4.5	8.5	1.5	1.5
D1616-6	400	5.0	9.0	1.5	1.5
D1618-6	400	5.5	9.5	1.5	1.5
D2410-6	600	3.5	7.0	2.0	1.5
D2412-6	600	4.0	7.5	2.0	1.5
D2414-6	600	4.5	8.5	2.0	1.5
D2416-6	600	5.0	9.5	2.0	1.5
D2418-6	600	5.5	10.0	2.0	1.5
D2420-6	600	6.5	10.5	2.0	1.5
D2422-6	600	7.0	11.0	2.0	1.5
D2424-6	600	7.5	11.5	2.0	1.5
D3020-7	750	6.5	11.0	2.0	2.0
D3022-7	750	7.0	11.5	2.0	2.0
D3024-7	750	7.5	12.0	2.0	2.0
D3026-7	750	8.0	13.0	2.0	2.0
D3028-7	750	9.0	13.5	2.0	2.0
D3620-8	900	6.5	11.5	2.5	2.5
D3622-8	900	7.0	12.0	2.5	2.5
D3624-8	900	7.5	12.5	2.5	2.5
D3626-8	900	8.0	13.0	2.5	2.5
D3628-8	900	9.0	14.0	2.5	2.5

QUADRUPLE SCREW DRYERS



QUADRUPLE SCREW DRYER

HoloFlite Model	Screw Diameter (mm)	Trough Length (m)	Envelope Dimensions (m)		
			Length	Width	Height
Q2414-6	600	4.5	8.5	2.5	2.0
Q2416-6	600	5.0	9.0	2.5	2.0
Q2418-6	600	5.5	10.0	2.5	2.0
Q2420-6	600	6.5	11.0	2.5	2.0
Q2422-6	600	7.0	11.5	2.5	2.0
Q2424-6	600	7.5	12.5	2.5	2.0
Q3020-7	750	6.5	11.5	3.5	2.0
Q3022-7	750	7.0	12.0	3.5	2.0
Q3024-7	750	7.5	13.0	3.5	2.0
Q3026-7	750	8.0	13.5	3.5	2.0
Q3028-7	750	9.0	14.0	3.5	2.0
Q3620-8	900	6.5	12.0	4.0	3.0
Q3622-8	900	7.0	12.5	4.0	3.0
Q3624-8	900	7.5	13.5	4.0	3.0
Q3626-8	900	8.0	14.0	4.0	3.0
Q3628-8	900	9.0	14.5	4.0	3.0