

# Metso

## Equipment Protection Services

Value and performance for a lifetime



# Value and performance for a lifetime

For peace of mind, reduced financial risk, and increased production uptime, we present Metso Equipment Protection Services (EPS).

Available for fixed screens or crushers and Lokotrack mobile equipment, EPS make sure that your Metso machinery stays in tip-top condition with scheduled inspections, extended warranties, and Metso Metrics remote monitoring.

Three different packages are available to give you comprehensive coverage throughout the lifetime of your new or used equipment. Whether you are a solo entrepreneur or working in larger quarry operations, EPS helps secure the value and performance of your assets.



# Metso EPS are built on three core elements:

1. Extended warranties up to five years (10,000 operating hours)
2. Service plans with inspections every 1,000 operating hours by qualified technicians
3. Metso Metrics remote monitoring

## 1. Extended warranties:

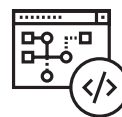


	EPS Classic	Cat® EPS	EPS Extensive
Year 5	Extended three-year coverage for five year (10,000 hours) total warranty and parts coverage. Available for static and portable crushers, Lokotracks, screens, and feeders.	Extended three-year coverage for five year (10,000 hours) total warranty and parts coverage. For Cat® engines on Lokotrack equipment.	Extended coverage for new (up to five years / 10,000 hours) Lokotrack equipment.
Year 4			
Year 3			
Year 2	Standard factory warranty of two years (4,000 hours).	Standard factory warranty of two years (3,000 hours).	Standard factory warranty of two years (4,000 hours) for new Lokotracks. Extended warranty up to two years (2,000 hours) for used Lokotracks.
Year 1			



## 2. Service plans

- Maintenance plans
- Certified inspections every 1,000 operating hours
- Metso, Cat® or Metso-trained certified inspectors



## 3. Metso Metrics

- Remotely monitor equipment in real-time
- Analyze data for optimal performance

# EPS Classic

- Extended equipment warranty
- Reduce risk and protect equipment
- Performance insights with Metso Metrics
- Genuine Metso parts ordered separately
- Fixed price per piece of equipment



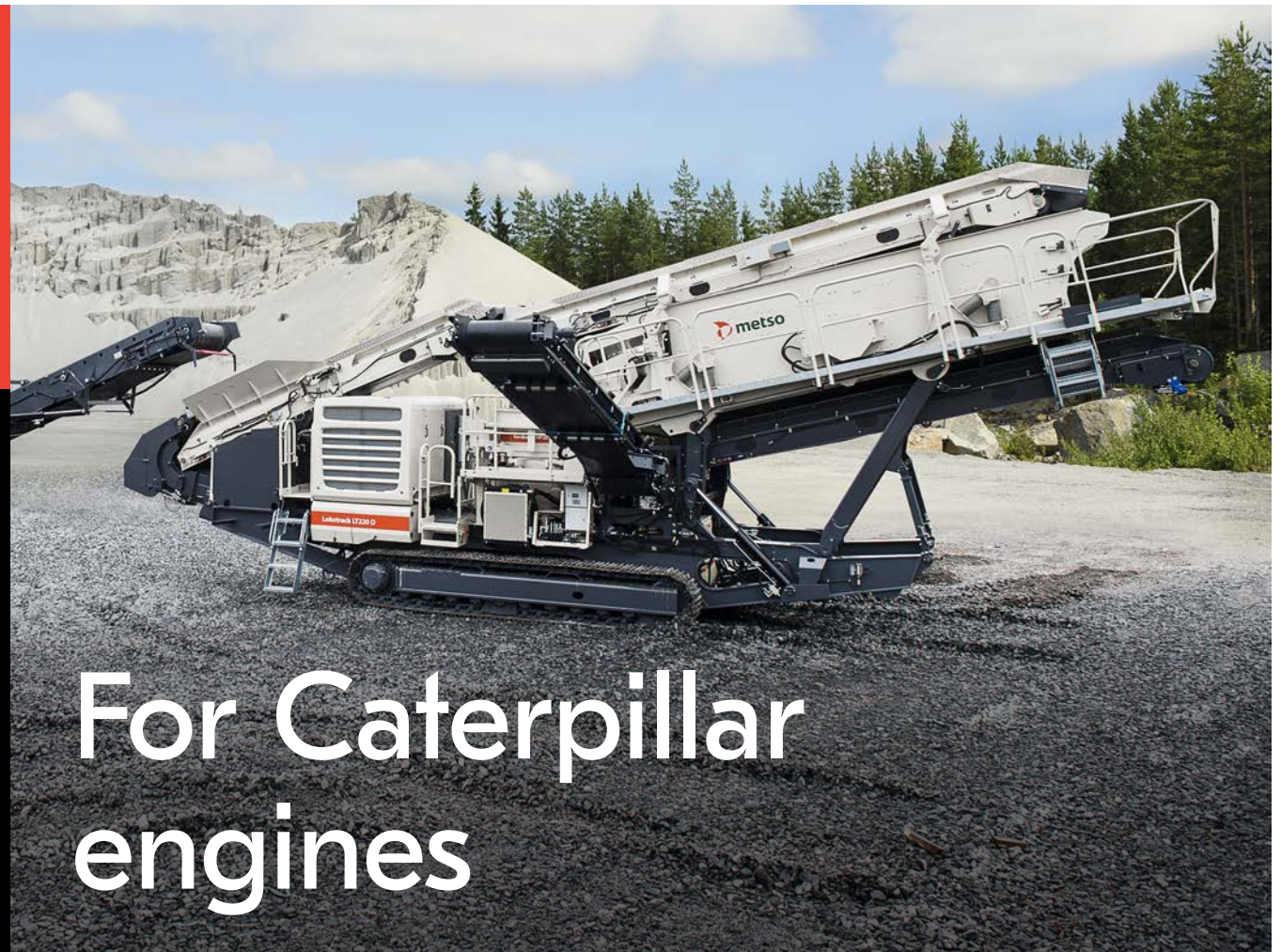
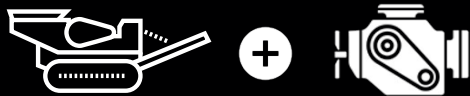
## The original Metso EPS

EPS Classic is our original EPS and is available for all new fixed feeders, crushers and screens, as well as Lokotrack mobile equipment. The extended warranty provides long-term coverage for your valuable assets. Covers selected main components.



# Cat® EPS

- Extended engine warranty
- Cat® dealer labour included
- Performance insights with Metso Metrics
- Supported by global Cat® dealer network
- Fixed price per engine

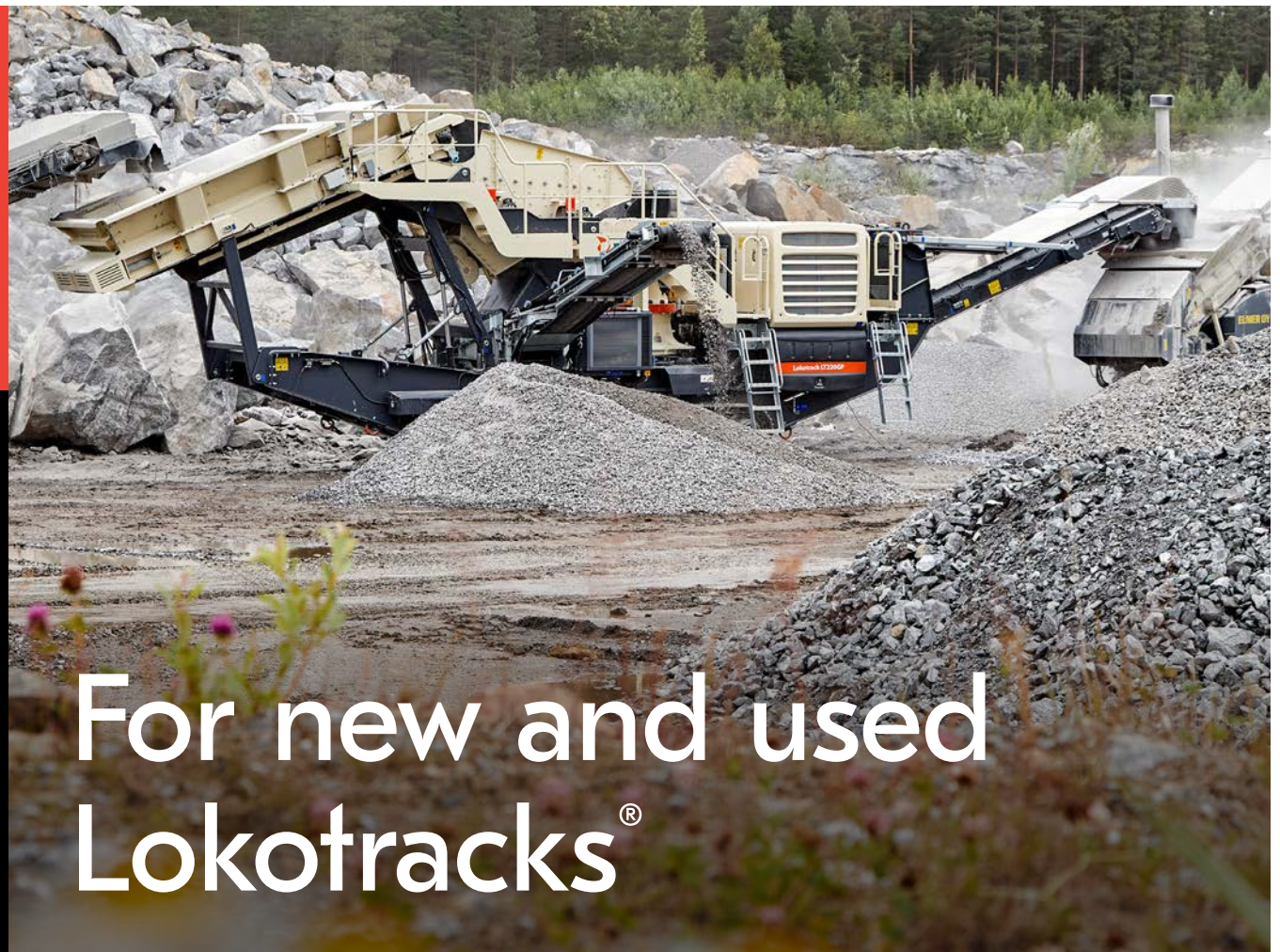


## For Caterpillar engines

Cat® EPS is an add-on service to the Classic EPS, specifically for Lokotrack mobile equipment with Caterpillar engines. The service covers all engine components (excluding consumables such as filters, hoses and belts), as well as damage to other Cat® parts.

# EPS Extensive

- Flexible options up to five years (10,000 hours) additional coverage for new equipment
- Flexible options from 6 months (1,000 hours) up to two years (2,000 hours) additional coverage for used equipment. Can be purchased on all Lokotrack® mobile plants less than 7 years and/or 7,000 hours
- Extend the life and productivity of assets
- Performance insights with Metso Metrics
- Fixed price per piece of equipment



## For new and used Lokotracks®

EPS Extensive is a separate offering that provides extended coverage for new and used Lokotrack mobile equipment. Coverage includes engine components, hydraulic components, electrical systems, drive systems, clutch systems, and transmission systems, in addition to selected main components. Contact your Metso or distributor sales team for more information on availability in your region.

## Three different Metso EPS packages to choose from:

	EPS Classic	Cat® EPS	EPS Extensive
<b>Duration</b>	Two year (4,000 hours) standard warranty plus three years (6,000 hours).	Extended warranty up to five years (10,000 hours).	Flexible options for new equipment up to five years (10,000 hours).  Flexible options for used equipment six months (1,000 hours) to two years (2,000 hours).
<b>Coverage</b>	Selected main components.	Engine parts and damage to other Cat® parts.	Engine components, electrical and drive systems, clutch, hydraulics, transmission, selected main components.
<b>Transferable</b>	No.	Yes.	To new customers and authorized dealers.
<b>Metso Metrics required</b>	Yes.	Yes.	Yes.
<b>Spares and wears</b>	Genuine Metso parts ordered separately.	Genuine Cat® parts ordered separately.	Genuine Metso parts ordered separately.
<b>Certified inspections</b>	Every 1,000 operating hours.	Every 1,000 operating hours, plus oil sampling.	Every 1,000 operating hours.
<b>Pricing</b>	Fixed price per piece of equipment.	Fixed price per engine.	Fixed price per piece of equipment.
<b>Claim management</b>	Metso.	Cat® dealer.	EPG Global.

Contact your closest Metso or distributor sales team: [www.metso.com/contacts](http://www.metso.com/contacts)

